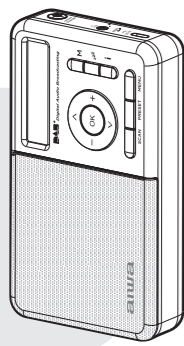


aiwa®

Japan est1951

RD-40DAB



QUICK GUIDE **EN**

GUÍA RÁPIDA **ES**

GUIDE RAPIDE **FR**

KURZANLEITUNG **DE**

GUIDA RAPIDA **IT**

+25

PORTABLE CLOCK RADIO DAB+/DAB/FM-RDS

aiwa®

Japan est1951

Follow us! aiwaEU



www.eu-aiwa.com

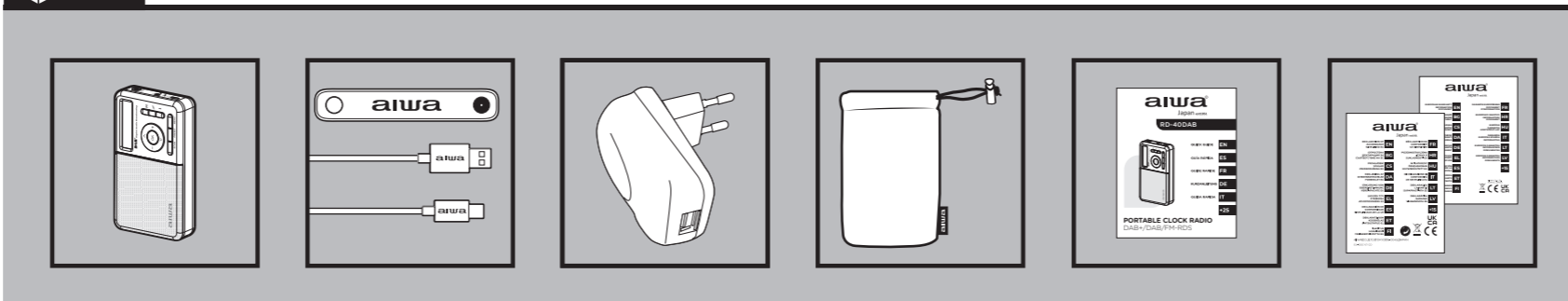
AIWA CO., LTD.
Kita-Ku
TOKYO 115-0045, JAPAN

©AIWA EUROPE S.L.
All Rights Reserved.

Printed in P.R.C.



01. WHAT'S IN THE BOX?

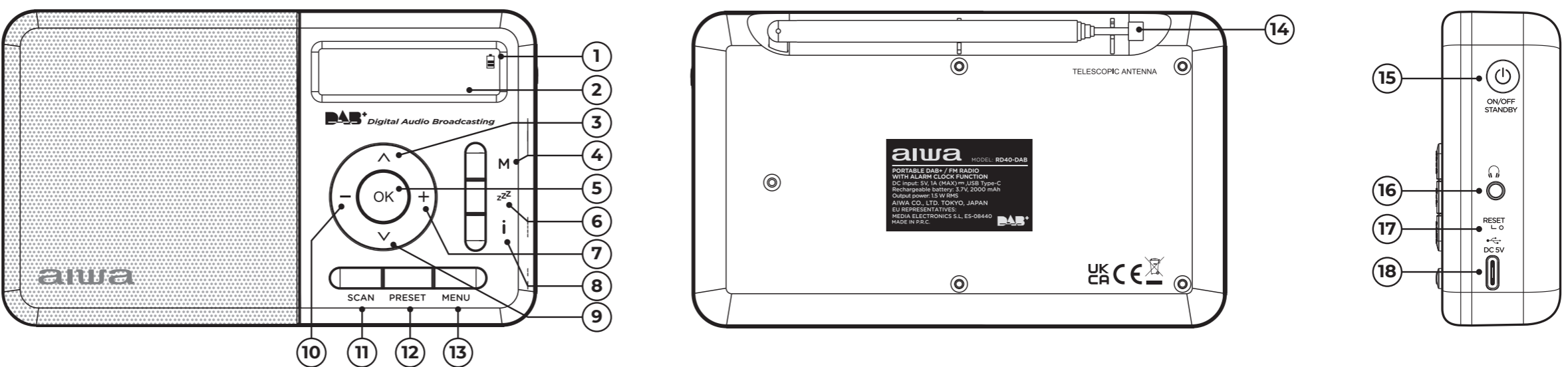


+ aiwa



www.eu-aiwa.com

02. OVERALL VIEW



1. Battery Charge Icon
2. LCD Display
3. Button to scroll

4. M (MODE) Button
5. OK (SNOOZE) Button
6. (SLEEP) Button

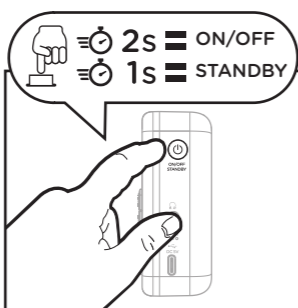
7. Volume up button
8. i (INFO) Button
9. Button to scroll

10. Volume down button
11. SCAN Button
12. PRESET Button

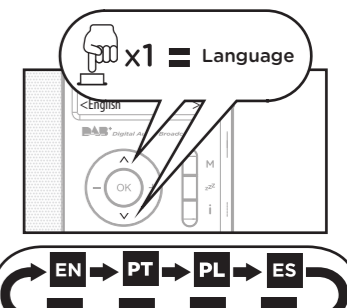
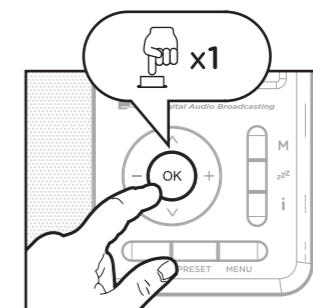
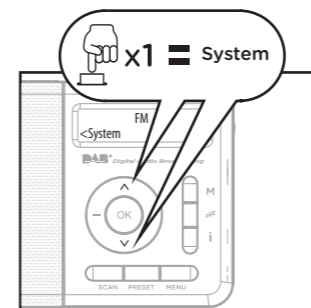
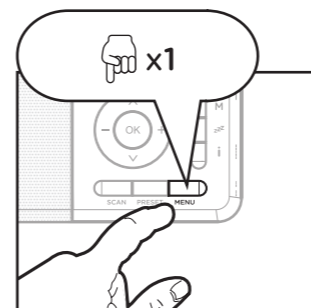
13. MENU Button
14. Telescopic Antenna
15. Button ON/OFF/Standby

16. Headphone jack
17. RESET hole
18. DC 5V Charging Jack

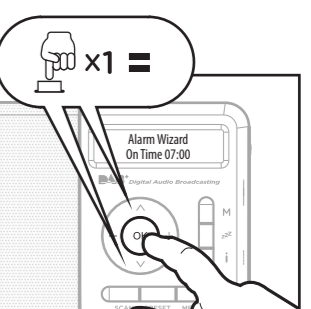
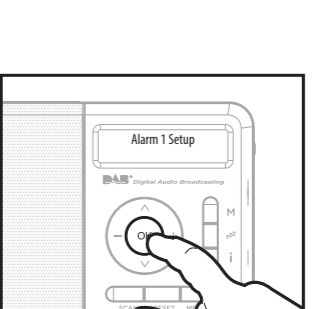
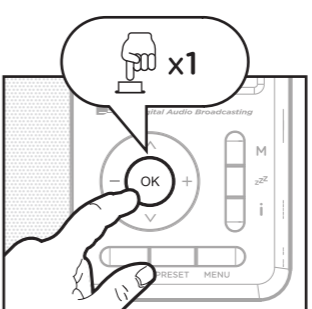
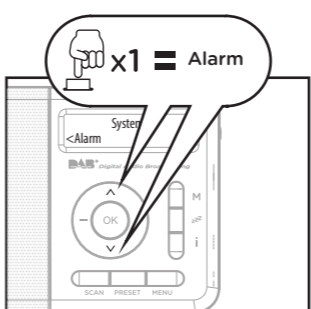
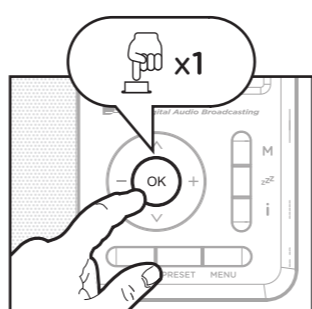
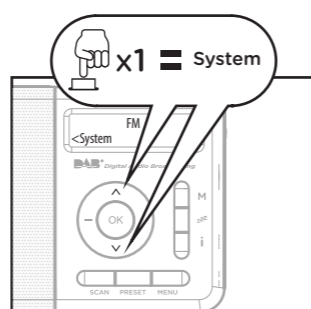
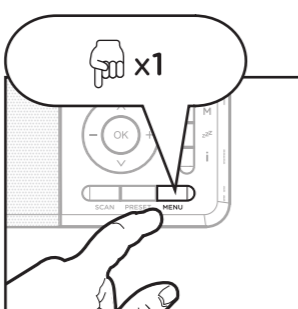
03. POWER ON/OFF/STANDBY



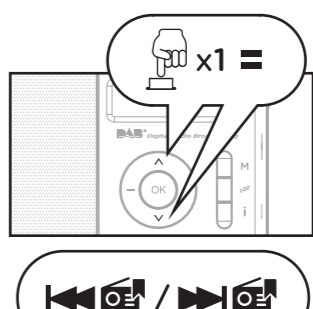
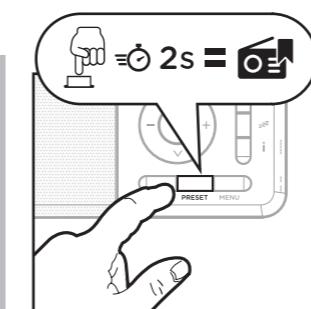
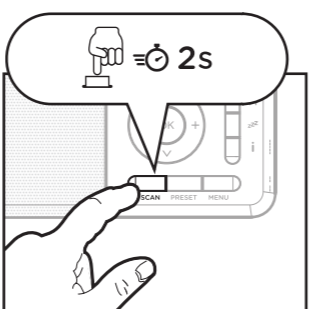
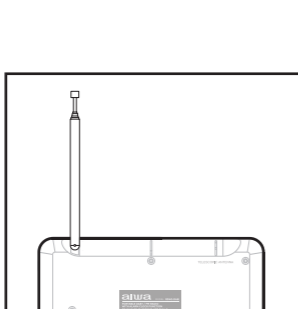
04. LANGUAGE SETTING



05. ALARM SETTING



06. DAB MODE AUTO SCAN RADIO STATIONS / STORING STATIONS MANUALLY (UP TO 50 RADIO STATIONS) / *DELETE STATION



* To eliminate stations: press the menu button and go to the prune submenu to delete the station.

07. FM MODE AUTO SCAN RADIO STATIONS / PRESET STATION STORAGE (PS) (UP TO 50 RADIO STATIONS WILL BE STORED AS PRESETS) / SEARCH RADIO STATIONS MANUALLY

